



TUBE TECHNOLOGIES, INC.
 1555 Consumer Circle
 Corona, CA 92880-1726
 Phone 951-371-4878
 Fax 951-371-6143
 www.ttiexhaust.com

61MMBE1
66-72 B-body &
70-74 E-body
MOTOR MOUNTS

BISCUIT STYLE MOTOR MOUNTS

- (!) These mounts were designed for compatibility with our Header part no's: 61WPBE, 64L, and 6417825
- For use with V8 K-members only.
- Rubber insulator anchors are not included with motor mounts. The stock insulators can be used, however they will require modification. (See modification illustrations below)
- Insulators are available through: Schumacher Creative Services - www.engine-swaps.com
 Bouchillon Performance - www.bouchillonperformance.com

Part no: 61MMBE1



Includes 10mm x 25mm x 1.5 pitch bolts.

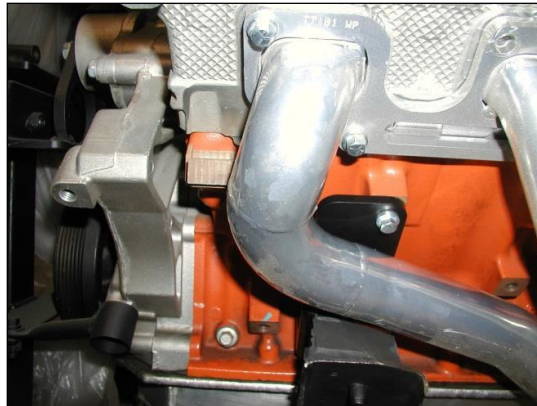


Photo 1

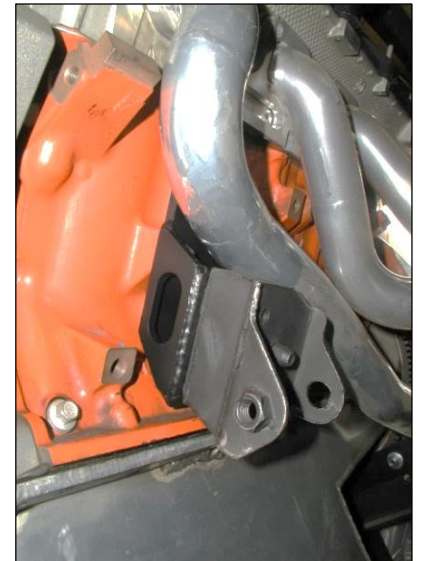
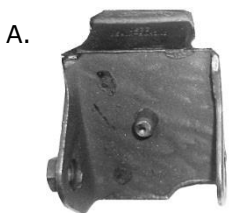
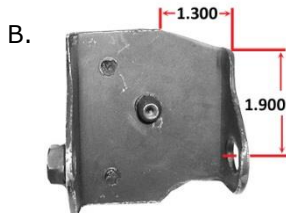


Photo 2

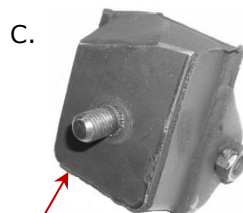
Modification required to the stock insulators.



Stock insulator
Anchor #2500



Drivers-side
Modification
dimensions.



Drivers-side
Shorten stud to
1.0" long.



Drivers-side
Modification
dimensions.



Passenger-side
Trim corner.



Modified Drivers-side



Modified Passenger-side