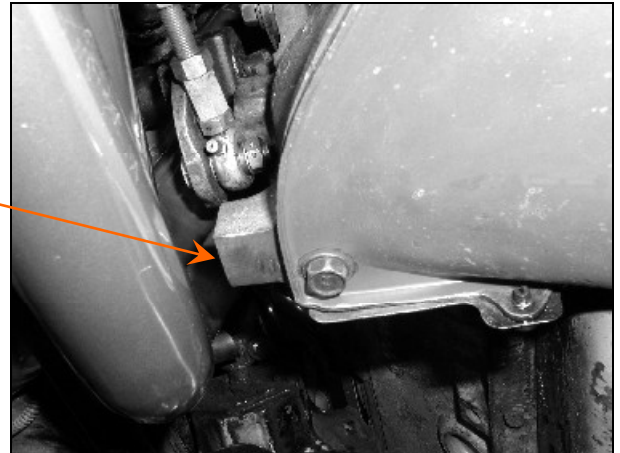




Tube Technologies, Inc.
 1555 Consumer Circle
 Corona, CA 92880
 Ph. (951) 371-4878
 www.ttiexhaust.com

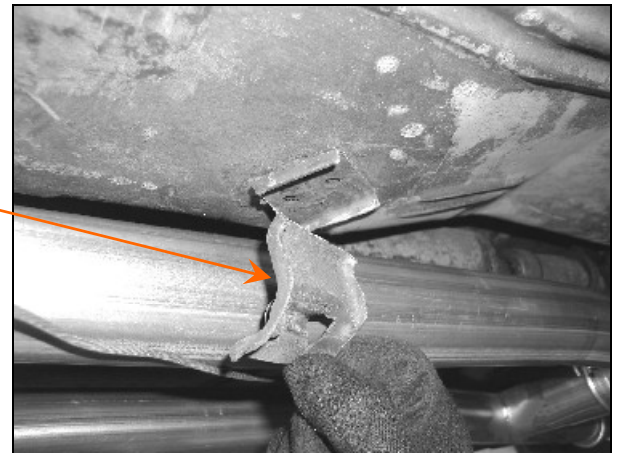
Required for Standard Transmission only

The casting ear on the Drivers-side will need to be trimmed shorter by 3/8" for header tube clearance.



When installing the dual TTI exhaust system...

It will be necessary to remove the Passenger-side emergency brake cable guide bracket.



90° Oil Filter Adapter Bolt (FN #21)

Must use small stock 90° oil filter adapter hex head bolt (3/4") or modify the large 90° oil filter adapter hex head bolt (1-3/16") by matching to .175 thickness.



Small stock 90° oil filter adapter bolt (3/4") hex head.



Large stock 90° oil filter adapter bolt (1-3/16") hex head.



Transmission Crossmember (FN #29)

Modification will be required to the Transmission Crossmember when running a Dual Exhaust System. See sheet # CMR0506